



PROSPECTUS

Westminster Christian School
est. 1981
Educating for Time and Eternity

Westminster Christian School

est. 1981

Educating for Time and Eternity



31 Westminster Gardens
Unsworth Heights
Auckland 0632
(09) 444 1983
www.westminster.school.nz

Nau Mai, Haere Mai Welcome

Dear Parents and Caregivers

I feel privileged to warmly welcome you to our school, in the name of our Lord, Jesus. Westminster Christian School is dedicated to providing your child with an environment in which our staff educate for time and eternity.

Our Tamariki are a heritage from the Lord, and at Westminster Christian School we provide your child with Christ centered education and values so they can be educated whilst experiencing God for themselves.

Our modern facilities with up-to-date technology provide a wide range of rich learning experiences. We develop programmes for individual needs, encourage multicultural activities, and offer a full sports programme for your child to participate and compete in. Students are encouraged to engage in their learning to reach their potential and to express their God-given talents. We believe that children are heirs of God and fellow heirs with Christ and we will provide excellence in Education so they grow into virtuous men and women.

Thank you for allowing me to introduce you to our learning community at Westminster Christian School. If you believe your child belongs at our school be sure to read through this Prospectus and get in touch with one of our admin staff. God willing, I will have the opportunity to meet you and your child/ren and welcome you into our school.

Mrs Sandra Jacobs
Principal
M.B.A, B.Ed, FDE, H.Dip.Ed



Mission Statement

Westminster Christian School, through the Spirit of God, educates the children of Christian parents for time and eternity by providing a Christ-centred academic curriculum founded on a Biblical World View.

Vision Statement

To, by the grace of God, be an innovative and Christ-centered primary and intermediate school, providing our children, through the New Zealand Curriculum, with the skills that will enable them to function and develop as active Christians for time and eternity. For students to become capable life-long learners, who nurture their God given abilities and talents in a responsible and respectful way in service to the school and wider community.



Special Character

Westminster Christian School was established in 1981 to serve the formal educational needs of families within the religious context of New Zealand's traditional Judeo/Christian heritage.

It is an inter-denominational, integrated, co-educational Christian school for students from New Entrant to Year 8.

Principle features of Westminster's Special Character and Mission are:

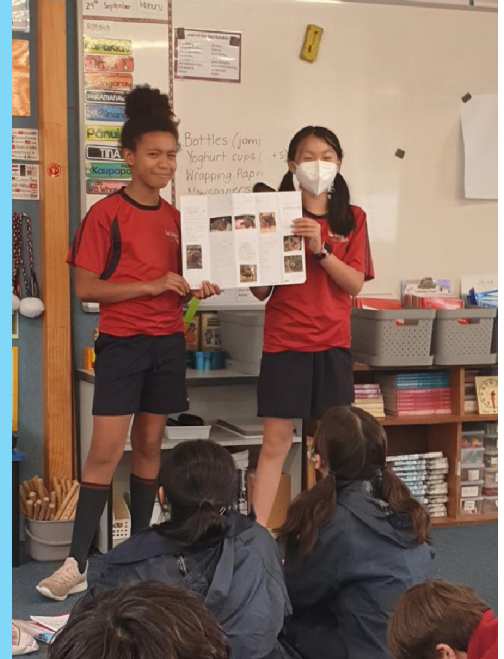
1. To encourage families and their children to be responsible stewards and image bearers of God.
 2. To celebrate the Lordship of Jesus Christ overall and every aspect of creation.
 3. To grow in the knowledge and wonder of the sovereignty of God.
 4. To develop a student's sense of destiny, citizenship, purpose and hope, both for time and eternity, in accordance with the Holy Bible.
-

Statement of Faith

Westminster Christian School is an interdenominational Christian school whose staff and families represent a number of churches. The Board of Trustees and Board of Proprietors publicly declare their commitment to the following Biblical truths consistent with Westminster Christian School's Integration Agreement.

We Believe:

- The Bible to be the inspired word of God.
- In God, the Father, Son and Holy Spirit.
- That all humans are created in the image of God and were given dominion over the earth in strict and loving obedience to God, to interpret all reality in accordance with His design and law.
- That we, by nature disobey God's law, and are therefore subject to eternal death.
- That separation from God has resulted in a fallen world infected by the misery and sorrows of human sin.
- That Jesus Christ the only begotten Son of God, was conceived by the Holy Spirit, born of the virgin Mary, died and was buried, was resurrected from the dead and ascended on high. He is seated at the right hand of God the Father and will return to judge the living and the dead.
- That Jesus by his life, death and resurrection, is the holy lamb of God who has purchased redemption for all those who believe in Him and commit themselves to a life of trust in Him as their personal Saviour and obedience to his teaching.
- All true believers are indwelt by the Holy Spirit who enables them to trust and obey Jesus.
- Such believers are, through God's grace, made members of the Church militant and upon dying enter into eternal life with Jesus and continue as members of the Church triumphant.
- As members of the Church militant such believers remain subject to all the vagaries of living in a fallen world but through devotion to Jesus, His word and help of the indwelling Spirit are enabled to fight the good fight of faith and persevere through all manner of trials and difficulties with joy amidst suffering.





School Management

The school functions under the management of the following bodies:

1. The Board of Proprietors:

- Own, maintain and develop the property.
- Oversee the Special Character of the school.
- Attend monthly board meetings.
- Have four representatives on the Board of Trustees.

2. The Board of Trustees:

- Employs the Principal, teachers and support staff of Westminster Christian School.
- Is responsible for the governance of the school, including policy making, implementation and review.
- Supports the Principal in the management of Westminster Christian School.
- Is responsible for conveying information effectively to both its own school community and beyond.
- Attend monthly board meetings.
- Consists of five parent representatives, four Board of Proprietors members, one staff representative and the Principal.
- Is elected every three years.



ATTENDANCE DUES AND DONATIONS

BOP

“Board of Proprietors”
“Westminster Christian School Incorporated”

Property Owners
Protect Special Character
Integration Agreement with
Ministry of Education

- Attendance Dues
- Proprietors Donation
- Special Character Donation

Richard Hoek
richardhoek@westminster.school.nz



BOT

“Board of Trustees”
“Westminster Christian School”

Employ Staff
Operating Expenses
Day-to-Day Running of School
Education

- Annual Donation Request

Nichole Gillanders
admin@westminster.school.nz

Our School Values

Westminster Christian School upholds the values of **Respect**, **Resilience**, and **Responsibility**. All students are entitled to a safe environment in which to learn and play. Students are representatives of Westminster Christian School, and as such, must abide by the school rules and its behaviour expectations.

Through implementing Positive Behaviour for Learning, our school has clearly defined values and expectations.

Respect

The way of treating or thinking about something or someone; considering their feelings, wishes or rights.

Resilience

The ability to withstand or recover quickly from difficult conditions; the power or ability to return to the original form after being bent or stretched.

Responsibility

The willingness to be answerable, to be trustworthy and accountable for our own conduct and behaviour.



Special Character Curriculum

Our Special Character is taught through Four Big Pictures throughout the year. These pictures drive all our planning and events for the year. The basic principles of each picture are as follows:

Term One: Identity in Christ

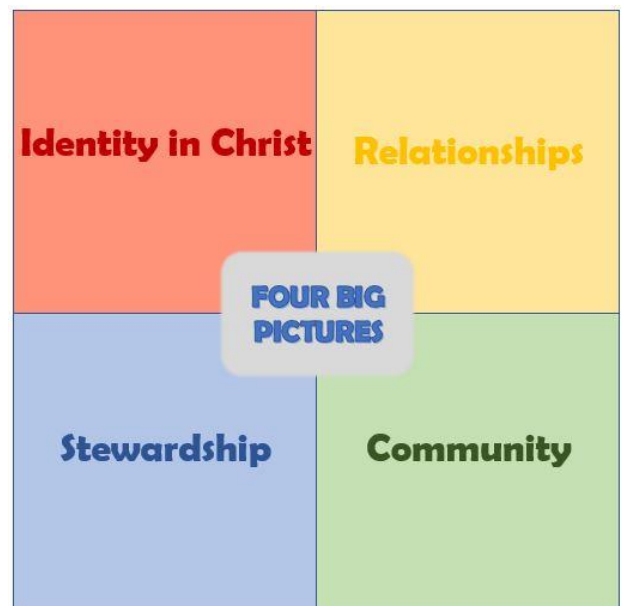
- We were created by God **in His image** - Imago Dei
- God blessed us all with a **unique set of talents and abilities**
- Because God loves me as His child, He sent His Son to die for my sins, **giving me eternal life**
- God sustains me and **will never leave me, nor forsake me**
- God made me a member of a heavenly family (His) as well as an earthly family (whānau) and cultural family (country).

Term Two: Relationships

- Love God first (Phil 2:1-2)
- Love others second
- Examine yourself (Who you are with the Lord impacts your other relationships).

Term Three: Stewardship

- God gave Adam and Eve dominion over His creation (Gen. 1)
- We are to be fruitful and nurture what God has blessed us with
- We should never be wasteful
- We should preserve what God has given us for future generations



Term Four: Community

- We are to serve each other on different levels: family, school, wider community, our country
- We should respect the roles of others in our community
- We should respect those in authority over us
- We should support and reach out to those in need

Curriculum

Westminster Christian School provides a wide range of academic, cultural, sporting and technological programmes for its students. Our curriculum meets the requirements of the National Curriculum Statements for all subjects and is taught from a Biblical World View.

Classroom Programmes	Technology / Arts Programmes
<ul style="list-style-type: none">• English – writing, reading, listening, oral, visual• Mathematics• Creation Studies• Science• Social Studies• Health/Physical Education• Information and Communication Technology• Library Information Skills	<ul style="list-style-type: none">• Food Technology• Biotechnology• Electronics Technology• Materials Technology• Media Studies• Music, drama, dance• Art• Digital Technologies
Cultural Programmes	Sports Programmes
<ul style="list-style-type: none">• Music Instrument Tuition• Choir• Orchestra• Drama• School Productions• Community Service• Kapa Haka	<ul style="list-style-type: none">• Lunchtime Sports• Skilled programmes in rugby, soccer, hockey, netball, cricket, softball, swimming• Competitive Interschool Sports including swimming, athletics, netball, soccer, Rippa rugby, cricket and cross country• Year 7/8 Sports Camp including hockey, touch rugby, basketball, chess and table tennis
Extended Education Programmes	Learning Support Programmes
<ul style="list-style-type: none">• Language / reading extension programmes• National / International English / Mathematics / Science competitions• Science and Technology challenges• Science Fair• Art• Gifted and Talented Education (GATE)• Outdoor Education• Self-directed learning• Robotics Class	<ul style="list-style-type: none">• English for Speakers of other Languages (ESOL)• Reciprocal reading programme• Teacher Aides working alongside children in classrooms• Booster programmes in numeracy and literacy

Students are regularly assessed on their progress. Teachers may adapt their teaching programme to suit an individual student's learning need. Class sizes vary according to levels but do not usually exceed 25. Formal school reports are issued in Terms 2 and 4.

OUR TEAMS

Junior Team: Year 0-3

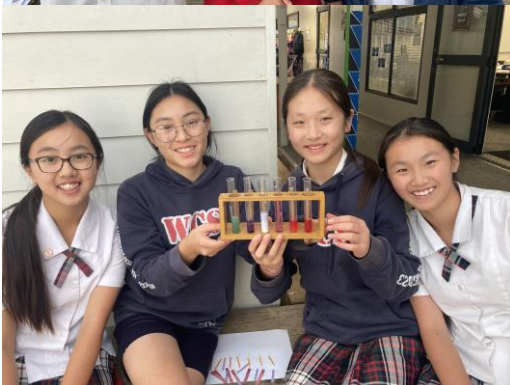
Our Junior Team covers Phase 1, the foundational years of school. Phase 1 focuses on thriving in environments rich in literacy and numeracy. We nurture our tamariki as they begin their school career and prepare them for the next phase. Our Literacy Programme is implemented with the Better Start for Literacy Approach. Throughout our weekly timetable, we have built in play-based learning as well as formal learning opportunities. During the Foundation Phase, we take time to build a sense of belonging into our students, labouring the importance of the Fruits of the Spirit, having an identity in Christ and caring for others.

Senior Team: Year 4-6

Our Senior Team teaches Phase 2, expanding horizons of knowledge and collaborating. In the Senior classes, students build upon the foundations set by the Junior Team. Our students are challenged to stretch themselves, try new things, and reach their potential academically. Our learning is varied to encourage engagement with formal work, hands-on learning, and education outside the classroom. As they progress through year 4 to 6, our tamariki are encouraged to take on more responsibility, build their resilience, and foster respect in all aspects of their school life.

Intermediate Team: Year 7-8

Seeing ourselves in the wider world and advocating with and for others, Phase 3 involves preparing our tamariki for higher school learning. Critical thinking is applied in great depth as well as outward thinking, challenging students to find ways to reach out and give back to the community. We have our own six-day timetables, class rotations between our teachers, and a higher level of independence, to grow adaptability in our students.



Domestic Enrolments

An Enrolment Pack is available from the school office or alternatively it can be downloaded from the school website:

www.westminster.school.nz/enrol. Once the application for enrolment has been completed, it must be returned to Westminster Christian School.

Preference for enrolment must be given firstly to those of the household of faith: "Westminster Christian School, through the Spirit of God, educates children of Christian parents for time and eternity..."

Preference Enrolments: Children of Christian parents with documents that support their active participation in their respective congregations and signed by their church leadership.

a. Children of Staff and Society members, followed by:

b. Siblings of preference students currently attending Westminster Christian School, followed by:

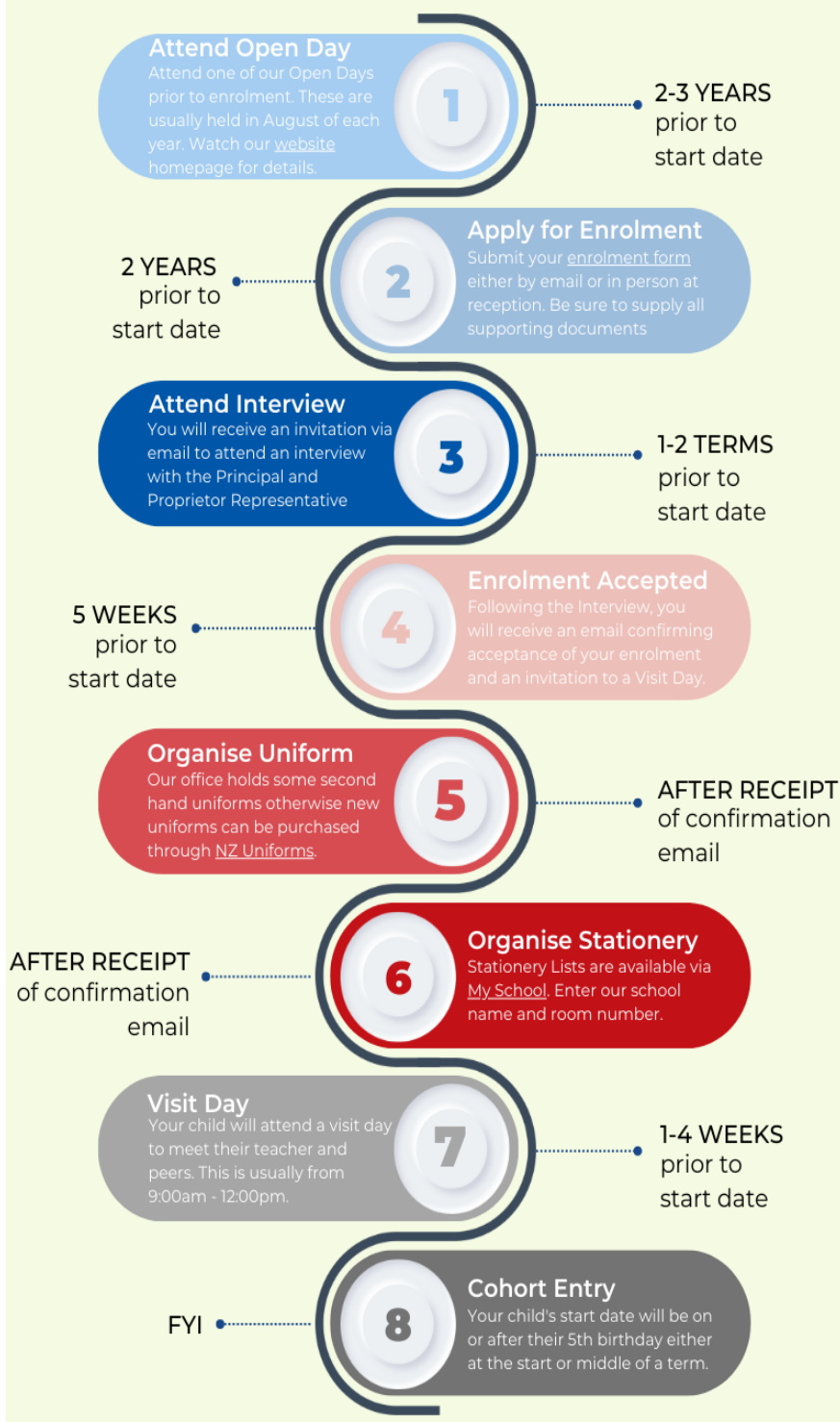
c. Students moving from another Christian School

d. Children of past students, followed by:

e. Children from other preference families, followed by:

Non-Preference Enrolments: Children from non-Christian families or have not been able to show an active membership in their respective congregation.

ENROLMENT PROCESS



- a. Children of non-preference siblings currently attending Westminster Christian School, followed by:
- b. Children of other non-preference families.

Note: The Government has set a maximum non-preference roll at 25 students for Westminster.

Once a space is available, the applicant will be informed of an interview time. The interview will be held between the Principal, Proprietor Representative, parents/legal guardians and the student to discuss the conditions of enrolment. A tour of the school will also take place at this time.

A student's acceptance will be at the discretion of the Principal.

International Students

An International Enrolment Pack is available from the school office or alternatively it can be downloaded from the school website: www.westminster.school.nz/international. All parts of the International Enrolment Pack must be completed in full and returned to Westminster Christian School office, before a placement can be considered.

A student's acceptance will be at the discretion of the Principal.

Westminster Christian School has agreed to observe and be bound by the Code of Practice for the Pastoral Care of International Students (Ministry of Education). Copies of the Code are available on request from Westminster Christian School or from the New Zealand Ministry of Education website.

Extra-Curricular Activities

The Westminster School Choir often sings at rest homes and retirement villages. The choir practices are during school hours and consists of students from Years 4-8. Auditions are done at the beginning of the year, or if spaces are available at the beginning of a term.

*I can do all things through Christ who strengthens me.
-Philippians 4:13*

The school also has an orchestra for students in Years 4-8. Some specialist music lessons are taught by private tutors on site such as violin, cello, recorder, and piano. Please contact Iona McDonald for further details on these: ionam@westminster.school.nz

In Westminster Christian School there are several positions our senior students can be elected to. These include Student Leaders, Librarians, Sport Monitors and Peer Mediators.

There are plenty of sporting opportunities on offer. Each term we have at least 22 teams playing in various sports including netball, basketball, football, softball and more. As the students progress through the years, they are given the opportunity in Intermediate to join the Westminster Wildcats. This is a team of approximately 34 students who travel to Matamata to compete in the Town & Country Sports Camp at Totara Springs Christian Camp. This is a challenging yet rewarding week away for the students and is the highlight of the year for many of them.



Fee Structure

Westminster Christian School is a State Integrated School with Special Character status, which means the following:

- The Westminster Christian School Society (Inc), known as the Board of Proprietors, owns and develops the property, is responsible for its mortgage, security, and for maintaining Westminster Christian School's Special Character.
- The Board of Trustees pays for the day-to-day resources of the school, managed by the Principal.
- The Ministry of Education is responsible for teacher's salaries and provides an operations grant to the school, based on the number of students attending the school.
- Attendance Dues are set by the Ministry and may not be altered without their approval.

- This fee structure below is only applicable to domestic students and does not include foreign fee paying international students.

School fees are payable in TWO parts:

1. Payment to the Board of Proprietors

Attendance Dues	\$316.25	
Proprietors Donation	\$212.50	
Special Character Donation	<u>\$ 50.00</u>	\$578.75 per term

2. Payment to the Board of Trustees

We ask for a donation of \$720 per annum to cover all your children’s activities e.g. swimming, trips, workbooks, photocopying, Athletics / Reading Eggs and all our eLearning costs. We also build into this donation finances to cover extra staff, we need to keep our class sizes manageable.

Homework

Students are responsible for completing all learning tasks, including homework.

Guidelines for homework:

New Entrant	Average 10-15 minutes per day
Years 2 & 3	Average 15-20 minutes per day
Years 4 & 5	Average 20-30 minutes per day
Years 6 and over	Average 45 minutes per day

Parents Prayer Group

Do not be anxious about anything, but in everything by prayer and supplication with thanksgiving let your requests be made known to God. -Philippians 4:6

This is an important ministry, where parents pray together for the needs of our school and our community. These meetings are held on a regular weekly basis on school grounds. Prayer requests are welcomed, and these may be handed in to the school office. If you wish to join this ministry, please contact the school office for details.

School Hours

First Bell:	8.50am – all children should make their way to class. All Junior classes start at 8:50am and finish at 2:50pm.
Morning Tea:	10.40am – 11.00am
Lunchtime:	12.40pm – 1.30pm
School Finish:	3.00pm

School Houses

Upon enrolment children are placed in one of our three school houses – Kiwi, Tui and Ruru. The house system encourages interaction between all ages in the school and provides leadership opportunities for our senior children who are elected as house captains. Families are grouped in the same houses. Houses are especially promoted during our sporting events like Cross Country.

House Points can be earned in class and throughout the day for the following:

- Showing Good Manners
- Showing Fruit of the Spirit
- Showing School Values
- Exhibiting the Key Competencies
- Showing PB4L Learning
- Earning a place in a whole school sport event heat or final



Creation Station

Before and After School Care



Creation Station is our Board of Trustees before and after school facility. Located on site at Westminster Christian School, it provides your child with a safe and friendly environment with access to a wide range of facilities. A variety of fun, creative and educational activities are offered.

Contact:

Supervisor: Wei Nie Wong
Address: Tech Room
31 Westminster Gardens
Unsworth Heights
Auckland 0632
Office: (09) 444 1983
Mobile: 021 153 8532 (text - after hours bookings)
Email: weiniew@westminster.school.nz

Mon to Fri: 7:30am - 9:00am
2:50pm - 4:15pm / 2:50pm – 5:45pm

Casual and Permanent Bookings available.

"I personally have been blessed beyond measure just seeing how God has lead us to meet a need within our community and seeing happy parents and happy children as they spend time and build friendships at Creation Station."

*Glenys Fuchs
Founder of Creation Station*

Westminster Christian Pre-School

‘And Jesus grew in wisdom and stature and in favour with God and men’

(Luke 2:52)

Westminster Christian Pre-School is an independent Bible-based, Christ-centered early childhood facility that caters for children between the ages of 2-5 years. It is staffed by a team of professionally trained, dedicated and friendly teachers.

It delivers an educational programme which covers emergent reading, writing, number skills and a wide range of other activities that are developmentally appropriate for individual and group learning.

Westminster Christian Pre-School provides a strong Biblical and educational foundation for your child that will help them transition with greater confidence into primary level education.

At Westminster Christian Preschool, your child will have the opportunity to:

- embrace the Fruits of the Spirit (love, joy, peace, patience, kindness, goodness, gentleness and self-control)
- understand that they are unique, special, made in the image of God
- develop social skills
- broaden communication skills
- learn early reading, writing and math skills
- develop gross motor skills
- be creative and self-expressive
- problem solve and take risks
- develop independence
- understand routines and boundaries



Pre-School Schedule

Monday, Tuesday, Wednesday, Thursday, Friday
(during primary school terms):

Morning Session 9.00am - 12.00 noon (half day)

Afternoon Session 12.00pm – 3.00pm (half day)

Full Day Session 9.00am – 3.00pm (full day)

(Maximum of 35 children per session)

Contact

Supervisor: Mrs Karin Herbst
Address: 31 Westminster Gardens
Unsworth Heights 0632
Auckland

Phone: (09) 444 1906

Email: westminsterpreschool@xtra.co.nz